



STRATA

SUPERIOR WELDING PRODUCTS



EZIMIG 215C PACK

200A INVERTER MIG / MMA WELDER WITH INTEGRATED TROLLEY & STORAGE

Ultra compact and easy to the EZIMIG 215C PACK multi-process welder is a must have for todays industrial professionals. With the latest IGBT inverter technology, extreme stress testing to 440V and insulation class IP23, this machine is built to last.

- IGBT inverter technology for smooth & stable welding output and increased reliability
- Aluminium chassis
- Professional wire feeder provides a smooth, consistent wire feed
- MIG waveform (inductance) control of the arc for smooth welding results
- Industrial IP23 casing with front panel protection resists damage, moisture and corrosion
- Lightweight & compact design, ideal for portable applications
- MIG spot welding function with 2T/4T trigger control
- Accurate pre-setting and feedback of welding parameters & output with dual digital display meters
- Great control MIG welding with adjustable pre flow, post flow, burn back and soft start settings
- Intelligent protection system with temperature, voltage and current sensors for increased reliability and safety
- Designed to work with generator power supply with protection from power surges
- Reversible polarity for gas & gasless MIG welding
- Quick connect inlet gas fitting
- Accessories include 3m earth lead with heavy duty earth clamp, 4m MMA lead with heavy duty twist lock electrode holder, MT250-4E MIG torch, 2 stage flowmeter, argon gas regulator and adapter, 4m gas hose, gas inlet quick connector, hose clamps and MIG drive rollers.



DIMENSIONS (LxWxH)	WEIGHT	INPUT POWER SUPPLY	INPUT POWER SUPPLY TOLERANCE	MAXIMUM INPUT CURRENT	GENERATOR CAPACITY	MIG OUTPUT VOLTAGE	MIG OUTPUT CURRENT	MIG DUTY CYCLE	WIRE FEEDING SPEED	MMA CURRENT OUTPUT	MMA O/C VOLTAGE
550 x 215 x 415mm	20.5kg	230V AC 15A 50/60Hz	230±10%V	42A	10kVA	16 - 24V	40 - 200A	200A@25% 155A@60% 120A@100%	1.5 - 16.5 m/min	10 - 160A	63V

MMA DUTY CYCLE	INSULATION CLASS	POWER EFFICIENCY	POWER FACTOR	STANDARDS	MIG DRIVE ROLLERS AVAILABLE	MIG WIRE SPOOL SIZE	MMA ROD SIZE	WARRANTY
160A@15% 140A@60% 110A@100%	IP23	85%	0.65	EN60974-1: 2012	V Groove: 0.6 / 0.8 / 0.9 / 1.0mm Knurled: 0.8 / 0.9 / 1.0mm U Groove: 0.8 / 1.0mm	D200mm/ D300mm 5kg	1.6 - 5.0mm	24 months



STRATA

SUPERIOR WELDING PRODUCTS



EZIMIG 215C PACK MIG WELDING ACCESSORIES & CONSUMABLES

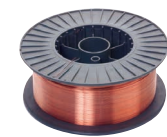
○ Standard ● Optional
☆ Common Consumables

ACCESSORY:	EZIMIG 215C:
Arc Leads	○ AAL3550
Earth Leads	○ AEL3550
MIG Torch	○ MT250-4E
Argon Regulator	○ GR101AR
Gas Hose	○ GH08
MIG Starter Kit	● MB25KIT
TIG Torch	● 17374
TIG Consumables Pack	● MPWKTIG-EU
Drive Roller 'V' Groove 0.6 - 0.8mm	○ 17835 (x 2)
Drive Roller 'V' Groove 0.9 - 1.0mm	○ 17836 (x 2)
Drive Roller 'V' Groove 1.0 - 1.2mm	● 17837 (x 2)
Drive Roller 'U' Groove 0.8 - 1.0mm	● 17841 (x 2)
Drive Roller 'U' Groove 1.0 - 1.2mm	-
Drive Roller 'U' Groove 1.2 - 1.6mm	● 17842 (x 2)
Drive Roller Knurled 0.8 - 0.9mm	○ 17838 (x 2)
Drive Roller Knurled 1.0 - 1.2mm	● 17839 (x 2)
Drive Roller Knurled 1.2 - 1.6mm	● 17840 (x 2)
MIG Tips (MMT) 0.6 - 1.6mm	☆ 0.6, 0.8, 0.9 1.0, 1.2, 1.6mm
MIG Shrouds (MCN) 70 = Conical 71 = Cylindrical	☆ MTA2570 MTA2571
Tip Adaptors (MTA) 81 = M6 82 = M8	☆ MTA2581 MTA2582

Mild Steel MIG Wire - ER70S-6

- Copper coated MIG wire for general purpose welding of mild steel using CO₂ or argon based shielding gases.

CODE:	DESCRIPTION:
MW5KG06	5kg Spool - 0.6mm MIG wire (D200)
MW5KG08	5kg Spool - 0.8mm MIG wire (D200)
MW5KG09	5kg Spool - 0.9mm MIG wire (D200)
D300 MW15KG08S	15kg Spool - 0.8mm MIG wire (D300)
D300 MW15KG09S	15kg Spool - 0.9mm MIG wire (D300)
D300 MW15KG10	15kg Spool - 1.0mm MIG wire (D300)
D300 MW15KG12	15kg Spool - 1.2mm MIG wire (D300)



Welding Magnets

WT-WMG03	3" Welding Magnet
WT-WMG05	5" Welding Magnet



Chipping Hammer

- Heavy duty chipping hammer for the trade

WT-SPCH	Spring Handle Chipping Hammer
---------	-------------------------------



Industrial Storage Trolley

- Pull out drawer with storage, 25.85kg

32673	Integrated Trolley to suit Compact MIG Models
-------	---



Automatic Welding Helmets

- Variable Shade • Complete with batteries ready to go
- Suitable for automotive DIY and industrial use.

SV3000	Auto Welding Helmet, Shade 5 - 13 + Grind Function (MIG/TIG/MMA/Plasma)
SV4000	Auto Welding Helmet, Shade 4 - 13 + Grind Function (MIG/TIG/MMA/Plasma)
DW7000XL	Auto Welding Helmet, Shade 5 - 13 + PRSL Filtration System (MIG/TIG/MMA/Plasma)



SV3000



SV4000



DW7000XL comes with battery powered air respirator.